

# HUMVEE CATALOG



Stealth Developers offers cost-effective off-road Humvees that can be sold as low as \$10,000 for well used trucks most likely have mechanical issues, but then we sell tuned up trucks from \$15,000-\$20,000 with a 3 month engine warranty.

Finally if you want a truck truly made to be aggressive and fully outfitted with the best features needed on your next adventure with a new engine, overland off road package, and full interior upgrades with a full 2 year warranty on the premium trucks costing at \$50,000 plus.

We invite you to look over our Humvee price options and availability on our models to see how we can get the most aggressive and reliable vehicle for your next adventure.

347-477-4913

[Stealthdevelopers.com](http://Stealthdevelopers.com)

[stealthdevelopergroup@gmail.com](mailto:stealthdevelopergroup@gmail.com)

347-477-4913



# STANDARD "AS IS" TRUCKS

We purchase these trucks from a variety of resources such as auction sites, trades, and whatever resources to get us the best wholesale cost on these trucks.

But getting a truck well used from the military that has been previously driven 2,000-10,000 miles on dirt roads by 18 year old soldiers can be very unpredictable on what is wrong with these trucks until we tune up and repair everything we find.

That is why we can either sell trucks that we get as is with no tune ups or inspections, but this will be a project truck for those that are comfortable to have a challenging project to repair and enjoy these iconic vehicles.

If you get an "AS IS" Humvee, keep in mind, Humvees have an extremely high resell value when fixed up. We have sold as is trucks to people for less than \$10,000 and find that they end up fixing it up and reselling it for over \$60,000.

View our "AS IS" pricing below and see how we can further help you get the truck you want.

## 6.3 L Non Turbo Humvees With Less Than 10k Miles

- 2 Door Soft Top \$9,500
- 4 Door Soft Top \$10,000
- Slant Back \$16,500
- Ambulance \$17,000

## 6.5 L Turbo Humvees w/ AC/Heat Less Than 10k Miles

(30 Day Extended Time to Get These Trucks)

- 2 Door Hard Top \$16,500
- 4 Door Hard Top \$19,500
- Slant Back \$24,500
- Ambulance \$25,000

## EXAMPLE OF INTERIOR OF AS IS HUMVEES:



2 Door Soft Top \$9,500



4 Door Soft Top \$10,000



Slant Back \$16,500



Ambulance \$17,000

# TUNED HUMVEES W/ WARRANTY

As you read from the previous page about our "As Is" Humvees that we get used from the Military and again, these trucks are unpredictable due to how the military has treated these trucks 2,000-10,000 on extremely rough terrain.

That is why we offer a 3 month warranty on our trucks that we tune up because we go through the extensive tune ups ensuring that the engine is fully tuned up and cleaned out and ready for your next adventure.

Diesels like this are made to last hundreds of thousands of miles, but can only last that long with consistent proper tune ups and maintenance.

Here is what we do to our trucks on the tune ups

- |                              |                                  |
|------------------------------|----------------------------------|
| Oil Change                   | Belt Check                       |
| Bleeding The Fuel System     | New Air Filters                  |
| Draining Water Separators    | Check Injectors                  |
| Changing the Lubricating Oil | Cleanout Flush Engine            |
| Change Filters               | Check and Fill Coolant           |
| Change Fuel Filter           | Air and Cabin Filter Replacement |
| Check Exhaust System         | Check Radiator                   |
| Check Spark Plugs            | Check and Replace Batteries      |
| Check & Replace Air Filter   | Check Steering System and Fluids |
| Check and Fix Gears          | Check All Gears                  |
| Check & Fix All Lights       |                                  |

## 6.3 L Non Turbo Humvees With Less Than 10k Miles

- 2 Door Soft Top \$14,500
- 4 Door Soft Top \$15,000
- Slant Back \$21,000
- Ambulance \$24,500

## 6.5 L Turbo Humvees w/ AC/Heat Less Than 10k Miles

(30 Day Extended Time to Get These Trucks)

- 2 Door Hard Top \$22,000
- 4 Door Hard Top \$25,500
- Slant Back \$26,500
- Ambulance \$29,500



2 Door Soft Top \$14,500



4 Door Soft Top \$15,000



Slant Back \$21,000



Ambulance \$24,500

# PRO HUMVEE TRUCKS

Elevate your Humvee from a basic truck to a refined civilian vehicle with our all-inclusive upgrade package. While retaining the original engine, we enhance it with a robust tune-up, backed by a reassuring 6-month warranty. Our upgrades encompass every aspect:

1. Key Starter: Effortless ignition for convenience.
2. Updated Tires: Superior traction and performance.
3. Repainted Inside and Out: Enhanced aesthetics and durability.
4. New Shell: Combining style and resilience.
5. New Seats: Plush, supportive seating for the utmost comfort.

This comprehensive transformation provides not only a better look but an elevated, 6 Month Warranty more comfortable driving experience that's sure to impress.

Here is what we do to our trucks on the tune ups

## 6.3 L Non Turbo Humvees With Less Than 10k Miles

- 2 Door Soft Top \$28,000
- 4 Door Soft Top \$30,000
- Slant Back \$32,000
- Ambulance \$39,500

## 6.5 L Turbo Humvees w/ AC/Heat Less Than 10k Miles

(30 Day Extended Time to Get These Trucks)

- 2 Door Hard Top \$32,000
- 4 Door Hard Top \$40,500
- Slant Back \$42,500
- Ambulance \$46,500

## EXAMPLE OF INTERIOR RESTORATION:



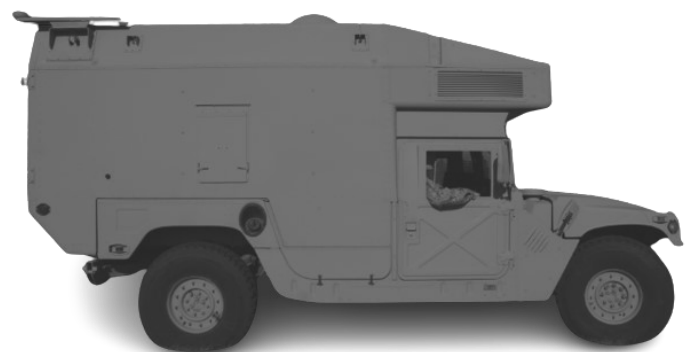
2 Door Soft Top \$28,000



4 Door Soft Top \$30,000



Slant Back \$32,000



Ambulance \$39,500

# PREMIUM HUMVEE TRUCKS

Introducing our Premium Humvee, meticulously engineered for the ultimate off-roading and adventure experience. Priced at \$80,000, this Humvee is a shining example of excellence. It's not just rebuilt; it's reinvented with:

- New 6.5 L Turbo Engine, w/ a 2-year Warranty
- A fresh, modern dashboard for a sleek, cutting-edge look.
- Revamped interior with a new skin and comfortable, stylish seats.
- Upgraded New Tires & Rims
- A striking new grill up front, adding both flair and functionality.
- New Off Road Suspension System W/ Compression System
- New Hard Top and Hard Doors

This fully loaded Humvee is reborn, ready to conquer any challenge and deliver unmatched satisfaction to the adventure enthusiast.

## 6.5 L Turbo Humvees w/ AC/Heat Less Than 10k Miles

(30 Day Extended Time to Get These Trucks)

- 2 Door Hard Top \$68,000
- 4 Door Hard Top \$80,000
- Slant Back \$85,500
- Humvee Fiberglass Camper \$120,500

## EXAMPLE OF INTERIOR RESTORATION:



2 Door Hard Top \$68,000



4 Door Hard Top \$80,000



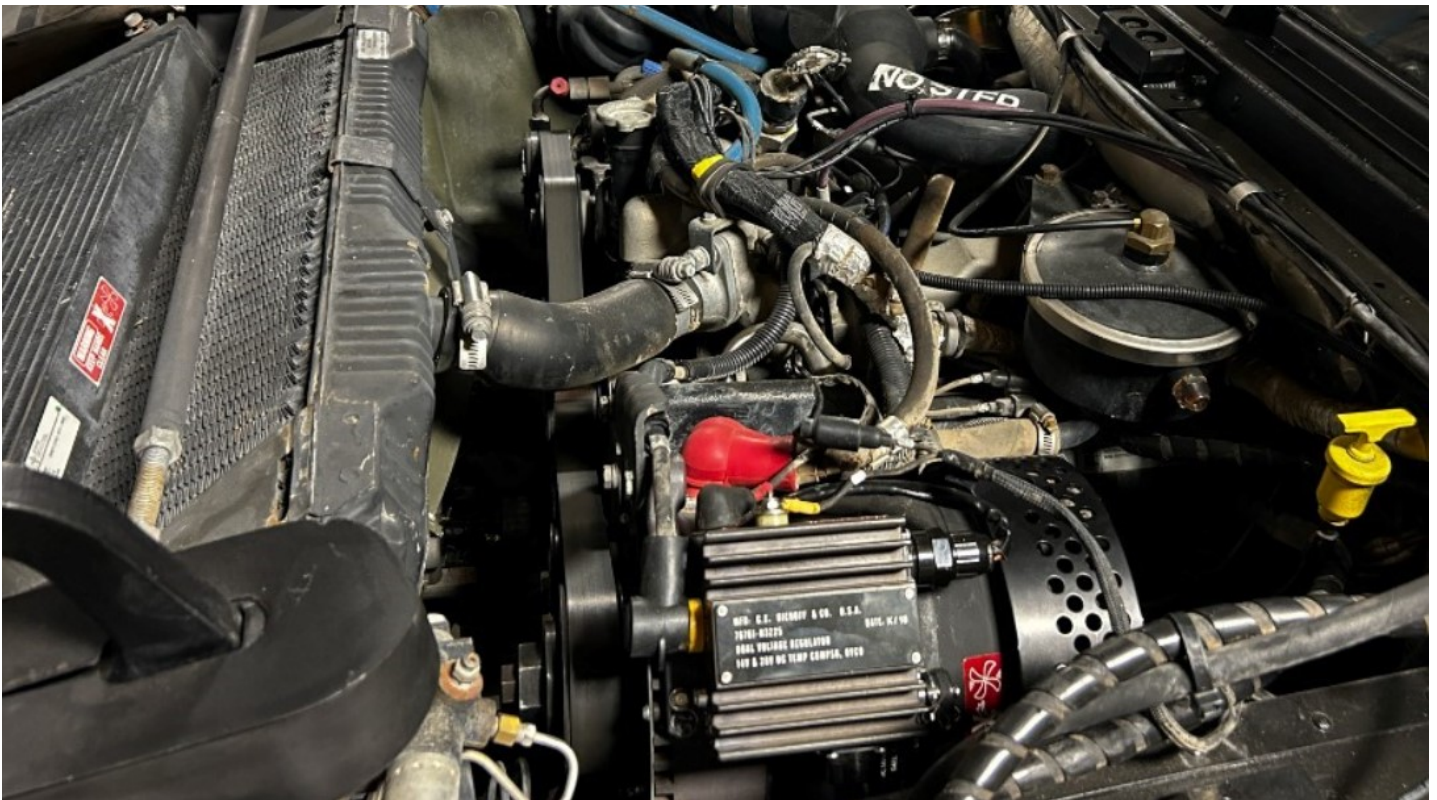
Slant Back \$85,500



HUMVEE CAMPER \$120,500

# WARRANTY

At Stealth Developers, our Humvees come with exceptional warranty options tailored to suit varying needs. Our "As Is" trucks, sourced directly from vendors without tune-ups, carry no warranty. For our basic trucks, which undergo a 21-point inspection and tune-up, we offer a 3-month warranty covering the engine. It's crucial to maintain records of basic maintenance like oil and filter changes, as neglect voids the warranty. Stepping up, our Pro trucks undergo a more extensive tune-up, with component replacements ensuring reliability, backed by a robust 6-month engine warranty. For those seeking unparalleled assurance, our 2-year warranty covers a full new engine replacement—but exclusively for our preferred engines. Should you provide your own engine, it won't be covered under warranty. These comprehensive warranty offerings reflect our commitment to delivering not only quality Humvees but also peace of mind, ensuring our customers experience reliability and satisfaction throughout their ownership journey. At Stealth Developers, we prioritize transparency and customer confidence, fostering a community of Humvee enthusiasts who trust in the durability and performance of our vehicles.



# HUMVEE CAMPER MOUNT

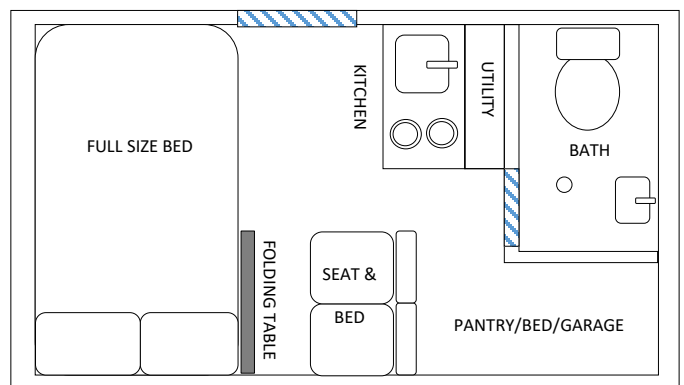
Fiberglass and Carbon Fiber, renowned for their lightweight and durable properties, form the foundation of our expedition trucks. Their seamless construction minimizes water penetration, providing a robust shell resistant to impacts and pressure. These materials not only ensure durability and waterproofing but also boast superior insulation. A closed-cell spray foam with R22 on walls and R30 on the ceiling, along with double-paned windows, enhances insulation against external elements. Wired like a regular home, our trucks feature a 100-amp breaker powered by a minimum of 800 AH lithium solar batteries, offering endurance, comfort, and efficiency. Explore our specifications below and contact us for additional pricing and quotes if needed.

- Dimensions: L132 x W90 x H 120
- Weight: 2800 LBS
- Small Fold In Kitchen Sink
- Under Counter Fridge
- Upper Kitchen Cabinets
- Compost Toilet
- All in One Bath Shower Set
- Mini Bath Vanity
- Bath Fan
- Can Sleep Up to 7
- 2 Person Queen Loft
- 2 Person Foldable Bench Bed
- Bonus Room Convertible for 2-3 Bunk Beds
- Foldable Dining Table to Bench Seating Area
- Bonus Room for Bike, Supply or Sleeping Space
- 100 Amp Braker With Inverter Able to Run 20 Amp Outlets
- LED Lights
- 4—475 Watt Solar Panels
- 800 AH Lithium Battery Backup System
- 30 Amp Generator Inlet If Needed
- Off Road LED Bar in Front & Back of Exterior
- Min 2 Exterior 20 Amp GFI Outlets
- Roof Rack System Around Panels
- Slide Out Awning
- Built in Ladder to Roof
- Built in Exterior Storage Boxes
- Fire Extinguisher Included
- Smoke Detector Included
- Fire Escape Labels
- First Aid Kit Included
- Spare Tire Mount
- Metal Garage Access Door

**Price IS ONLY FOR THE CAMPER, TRUCK IS NOT INCLUDED**

**PRICED AT: \$52,500**

**[CLICK HERE TO VIEW OUR WEBSITE OVERVIEW](#)**



# HUMVEE CAMPER MOUNT

## GALLERY & FEATURES INCLUDED

(VISIT OUR WEBSITE TO VIEW MORE IMAGES)

QUEEN BED



FOLD SINK



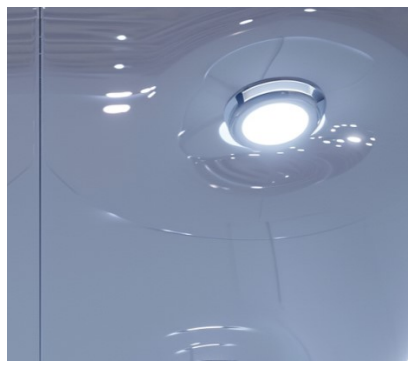
RV WINDOWS



COMPOST TOILET



LED LIGHTS



FOLD SEAT 2 BED



A/C & HEAT



SOLAR PANELS



SOLAR INVERTER





# MAINTENANCE

Maintaining a military Humvee in peak condition is crucial for its optimal performance and longevity. Key components to focus on include:

**Engine Oil:** Regular oil changes are vital to ensure proper lubrication and prevent excessive wear on the engine.

**Fuel Filters:** Given the sensitive nature of diesel engines, regular replacement of fuel filters is essential to prevent contaminants from compromising performance.

**Air Filters:** Clean air filters are critical for maintaining optimal airflow to the engine and preventing damage from dust and debris.

**Coolant System:** Regularly check and maintain coolant levels, ensuring the radiator and cooling system function correctly to prevent overheating during missions.

**Transmission Fluid:** Regular changes of transmission fluid contribute to smooth gear shifting and prolong the life of the transmission.

**Battery:** Ensure clean and secure connections, regularly check charge levels, and maintain the battery to guarantee reliable starts during military operations.

**Brake System:** Regular inspection and timely replacement of brake pads and rotors are crucial for effective braking and operational safety.

**Tire Maintenance:** Proper tire inflation, rotation, and alignment contribute to fuel efficiency and ensure tire longevity in various terrains.

**Exhaust System:** Regularly inspect the exhaust system for leaks or damage, ensuring optimal emission control and engine performance in mission-critical situations.

**Glow Plugs or Block Heater:** In cold climates, ensure the proper functioning of glow plugs or block heaters to facilitate reliable starts during military operations.

**Turbocharger:** Regularly inspect and clean the turbocharger to guarantee optimal performance and fuel efficiency during critical missions.

**Timing Belt or Chain:** Adhere to recommended intervals for replacing timing belts or chains to prevent engine damage during military assignments.

**Suspension Components:** Regular inspection and replacement of worn-out shocks, struts, and other suspension components are essential for a smooth and safe ride in rugged military terrains.

**Differential Fluid:** Change differential fluid at recommended intervals to ensure proper lubrication of differential gears during military operations.

**EGR System:** Maintain and clean the EGR (Exhaust Gas Recirculation) system components to prevent carbon buildup, ensuring emissions control during military assignments.

Adhering to a scheduled maintenance plan and promptly addressing any issues that arise are imperative for keeping a military Humvee finely tuned for the demands of its mission. Following the manufacturer's guidelines and promptly addressing concerns will contribute to the vehicle's reliability and longevity in military operations.

# NO CREDIT CHECK FINANCING



We do offer in house financing, but we first recommend you to consult with your local bank to see if you can get the best competitive rate for your Humvee. If there is nowhere else to go, than we do offer in house financing requiring a minimum of 50% down with a 2 year term with 20% finance fee. Our interest rate is not like other banks that roll over interest year by year, but we only have a straight 20% fee on the value of what you are borrowing and that is it.

But there will be penalties for late payments or late payoffs on your Humvee. Please contact us to get access to our finance program.

347-477-4913

[Stealthdevelopers.com](http://Stealthdevelopers.com)

[stealthdevelopergroup@gmail.com](mailto:stealthdevelopergroup@gmail.com)



# TURN AROUND TIME

Many of our Humvees undergo a meticulous production process, with approximately half of the customization completed in our in-house workshop and the remaining half outsourced to our trusted manufacturers. When opting for a custom build, expect a crafting period of 2-6 months, tailored to your unique specifications.

For those seeking a quicker turnaround, our pre-designed Humvees, listed with basic layouts, can be ready for delivery in just 30-60 days. Within this timeframe, you have the flexibility to choose additional options, including colors, solar features, and off-road enhancements, as long as they align with our existing layouts. Deviating from our standard layouts extends the custom build timeline to 2-6 months.



# UPGRADE OPTIONS

## INTERIOR UPGRADES

STEERING WHEEL



GRIP HANDLES



KEY START



NEW SEATS



LEATHER INTERIOR



REPANDED INTERIOR



## DASH KIT UPGRADES

DASH KIT A



DASH KIT B



DASH FACE PANEL



# UPGRADE OPTIONS (CONTINUED)

## RACKS & BUMPERS

A1 FRONT BUMPER



A2 REAR BUMPER



A3 BUMPER



CRADLE RACK



SHORT RACK



FULL RACK



## TIRE UPGRADES

TIRE COMPRESSION



PREMIUM TIRES



NEW SUSPENSION



# UPGRADE OPTIONS (CONTINUED)

## DOOR UPGRADES

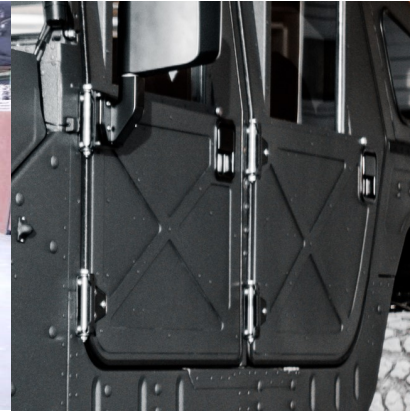
STANDARD



PREMIUM



LIGHT WEIGHT



## SHELL UPGRADES

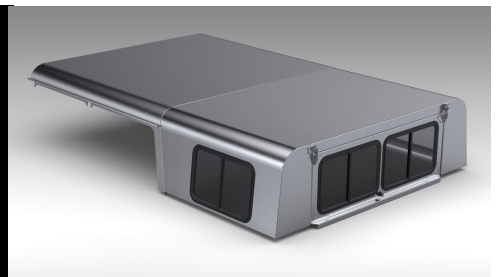
STANDARD



SOFT TOP



WAGON



UTILITY SHELL



2 DOOR HARD TOP



SLANT BACK SHELL

